



When the plunger is pressed, ManeStay's hook is exposed. The stainless steel compression spring inside is very strong and poses a pinching risk.

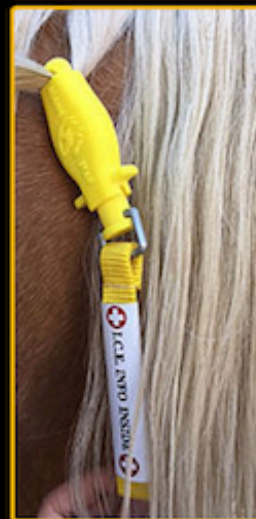
WARNING: Do not place a finger inside the hook! It **WILL** be pinched!



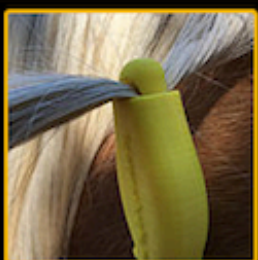
Loosely twist a small section of mane hair. The hair needs to completely fit inside the hook so the hair can be fully pulled inside ManeStay.



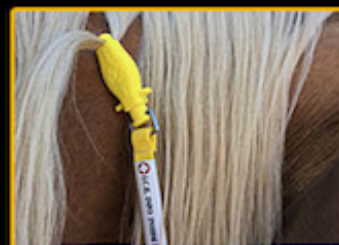
When the plunger is released, the hair will be drawn inside ManeStay.



Notice the mane hair is bent when pulled into ManeStay. This means it's attached properly. If you tug on ManeStay and it is not secure, you've either put too much or too little hair into the hook--try it a few times and you'll get it just right! *(HINT: Loosely twisted hair that fits easily into the hook works best. Also, the coarseness of your horse's mane hair will affect the quantity that can be correctly inserted.)*



Here's ManeStay correctly attached. Practice this a few times now . . . not when the emergency is real.



POSITIONING: Be sure to attach ManeStay ten (10) or more inches from the horse's ears (so it doesn't touch the ears when his head is down), but still in the upper 1/3 of his mane.



ManeStay IS NOT A TOY. PLEASE KEEP IT OUT OF CHILDREN'S HANDS TO AVOID INJURED FINGERS!



ManeStay's emergency contact information form. Using ballpoint or ultrafine Sharpie® your info is permanent *and* waterproof.



Make it easier on rescue folks so they'll know at a glance whether they need to spend precious time scanning your horse for a chip. Simply circle Yes or No.